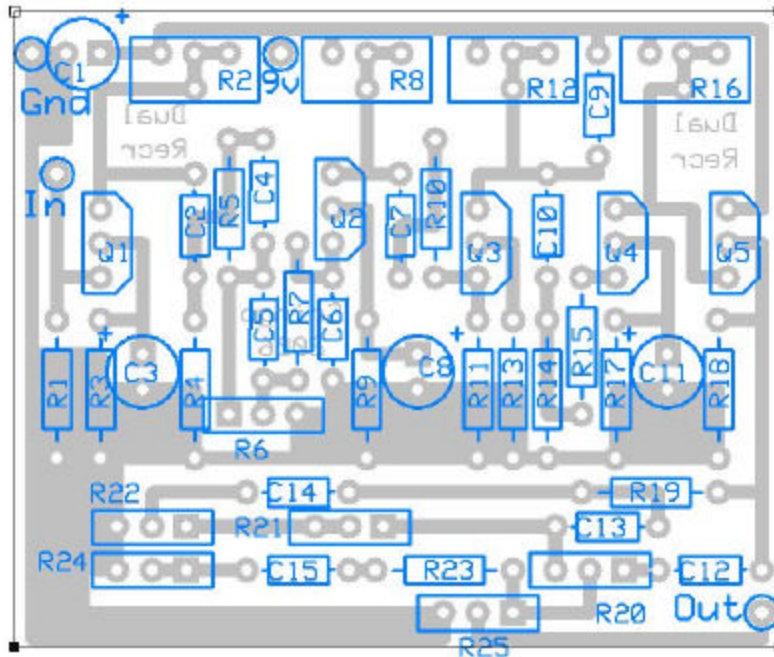


"Dual Rectifier" Mesa Boogie DR red channel emulation

PCB layout by Pablo De Luca (aka Gringo)

Version 1.21 April 26, 2006

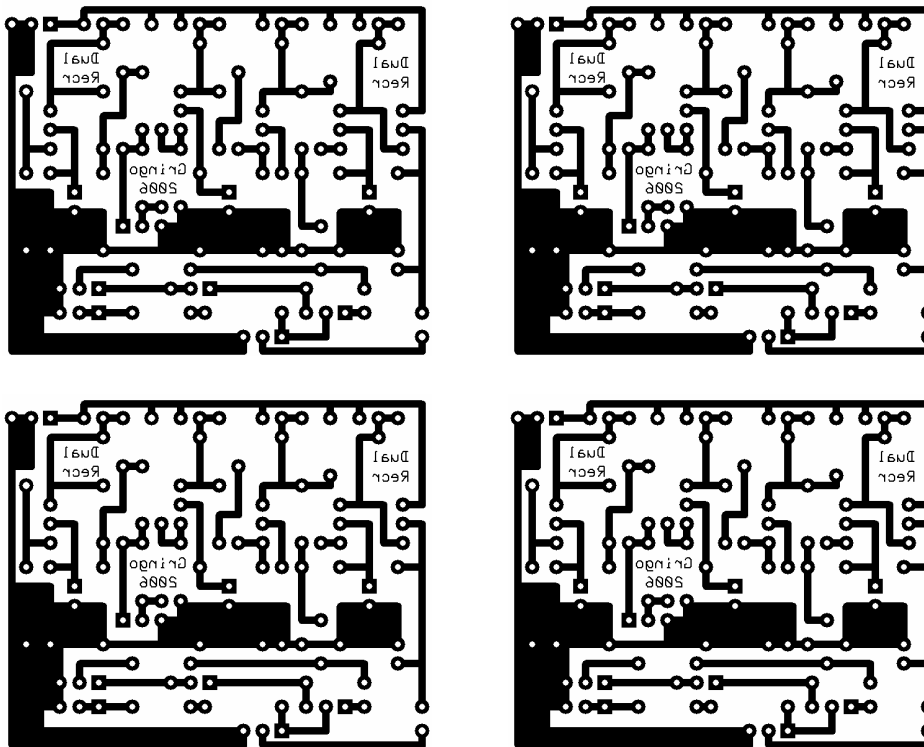


Parts List:

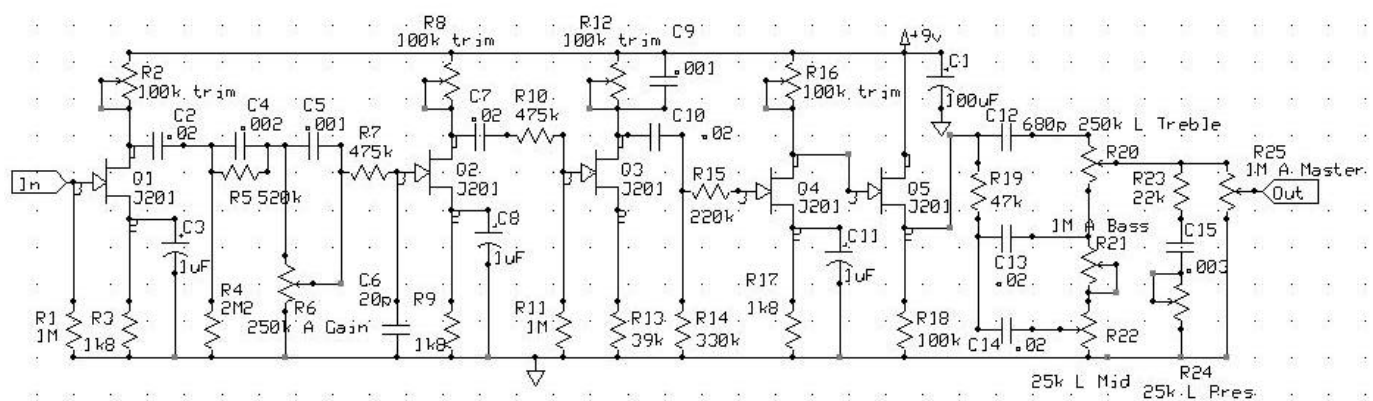
Capacitors	Resistors	Semiconductors
C1 100uF	R1 1M	Q1 J201
C2 .022	R2 100k trim	Q2 J201
C3 1uF	R3 1k8	Q3 J201
C4 .0022	R4 2M2	Q4 J201
C5 .001	R5 520k / 680k*	Q5 J201
C6 20p	R6 250k A / 1M A* Gain	
C7 .022	R7 475k	
C8 1uF	R8 100k trim	
C9 .001	R9 1k8	
C10 .022	R10 475k	
C11 1uF	R11 1M	
C12 680p	R12 100k trim	
C13 .022	R13 39k / 3k9*	
C14 .022	R14 330k	
C15 .0033	R15 220k	
	R16 100k trim	
	R17 1k8	
	R18 100k / 10k*	
	R19 47k	
	R20 250k L Treble	
	R21 1M A Bass	
	R22 25k L Mid	
	R23 22k	
	R24 25k L / 100k L* Pres	
	R25 1M A Master	

* Dr Boogey [by Electrictabs]
part value

Transfers:



56.52mm x 47mm (2.225" x 1.85") aprox.



Mesa Boogie Dual Rectifier
Red Channel

Drawn By Gringo

Rev 1.2
4/23/2006

Page #. or name